



# **SPRINGPOLE GOLD PROJECT**

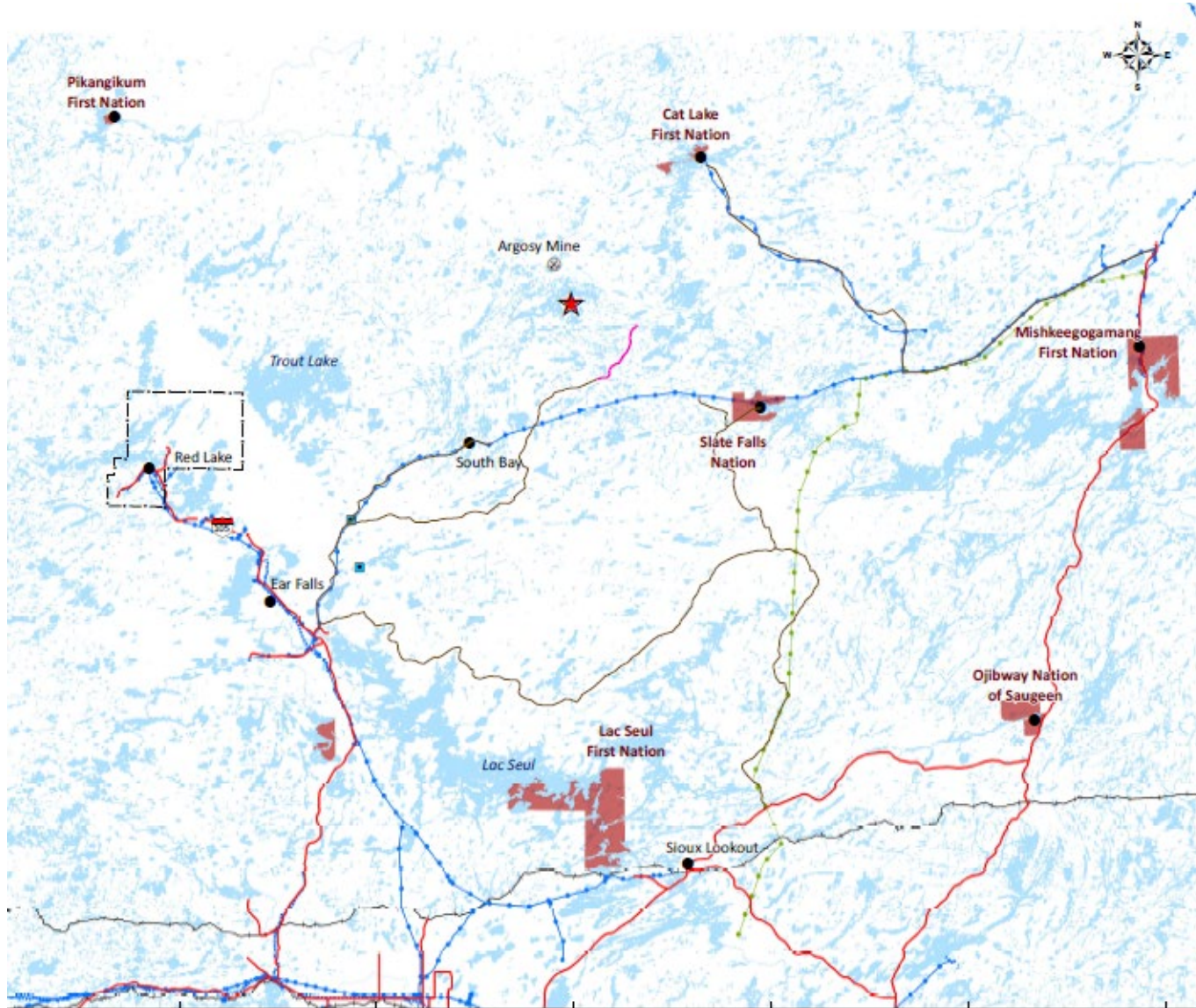
Project Overview June 2021

Cat Lake First Nation, Slate Falls First Nation, Lac Seul First Nation  
Joint Environment Committee



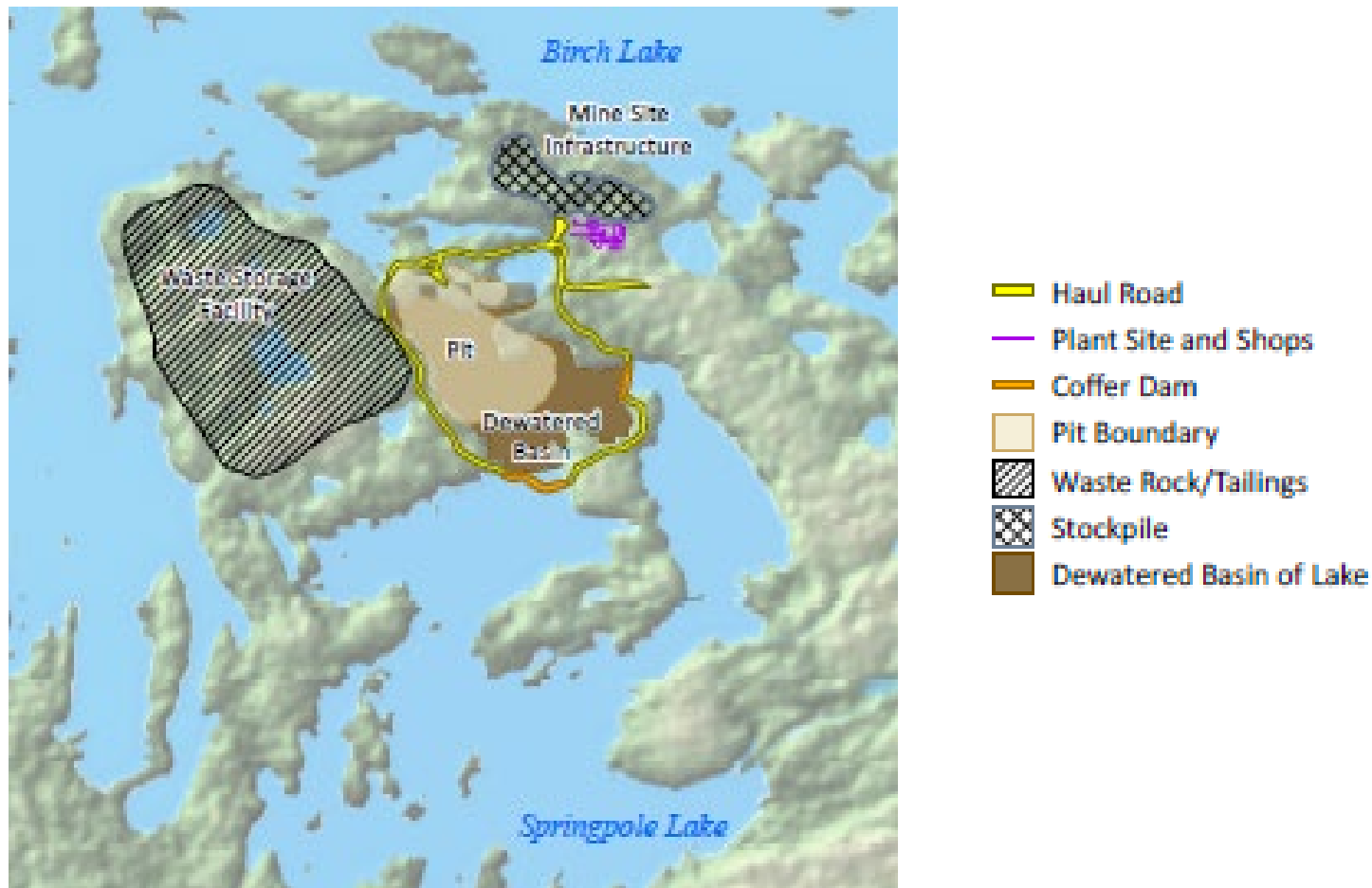
- Introductions 
- Springpole Project Overview 
- Environmental Assessment Overview 

# Springpole Gold Project Overview – Project Location



- 40 km southwest of Cat Lake First Nation
- 45 km northwest of Slate Falls First Nation
- 120 km north of Lac Seul First Nation
- 140 km north of Sioux Lookout

- Includes the development, operation and eventual decommissioning and closure of new gold mine
- Life of Mine is 12 years
  - 3.8 million ounces of gold
  - Average Annual Gold Production of 335,000 ounces
  - Initial construction cost estimated at US\$718 million
- Key components include:
  - Open pit gold mine (and adjacent dewatered basin)
  - On-site ore processing plant
  - Mine rock storage areas
  - Tailings management facility
  - Mine site infrastructure (buildings/access road)
  - Transmission line



Conceptual site plan and project description – subject to change based on ongoing engineering and consultation activities (including alternatives)

FMG believes the Project can be developed to support the respective vision and development goals that the Shared Territory Protocol Nations may have.

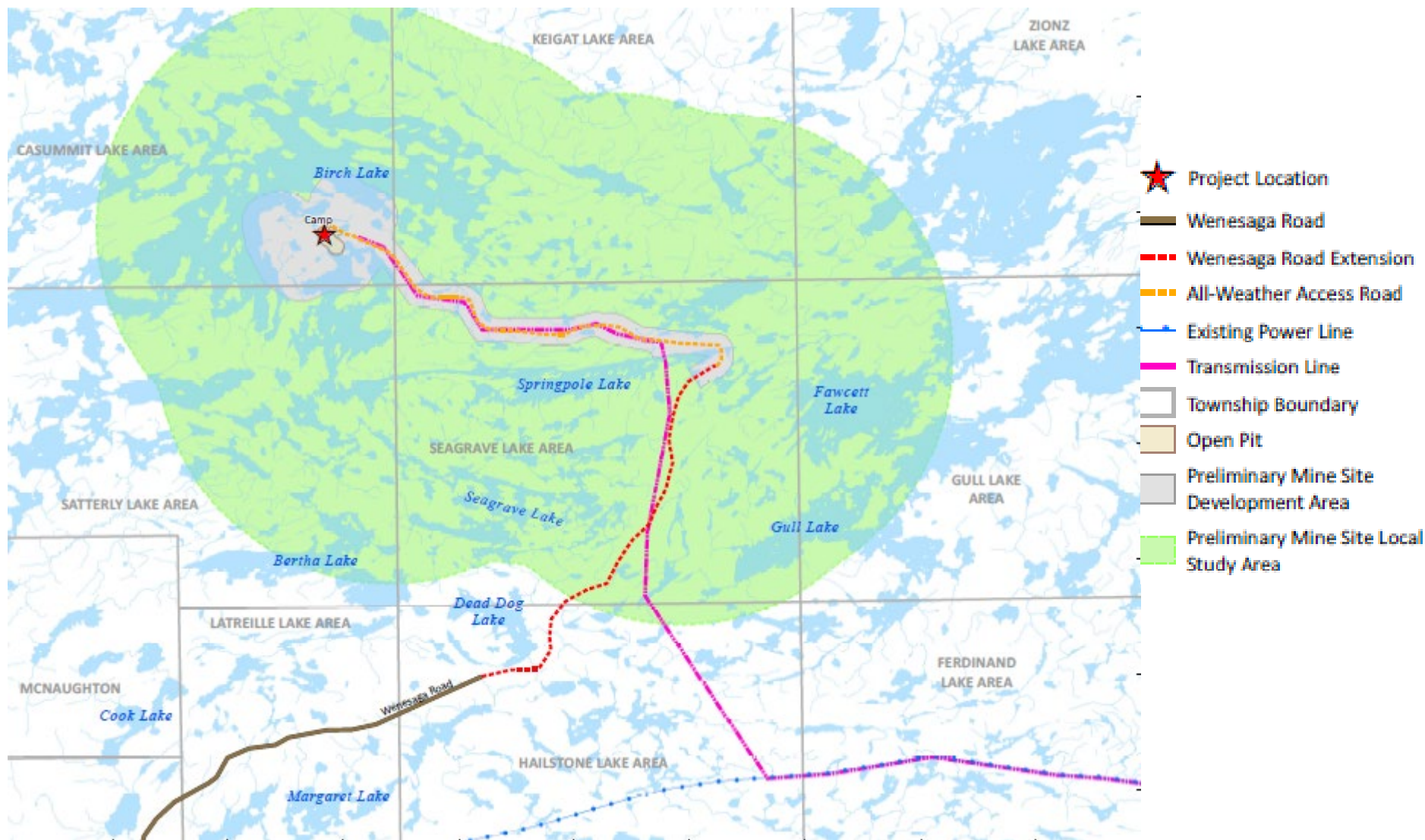
Potential benefits and contract opportunities related to the Springpole Project may include:

- Road access connecting Cat Lake to Sioux Lookout
- Electricity grid expansion with renewable energy potential
- Training and employment opportunities
- Community development/capacity initiatives as identified by Chief and Council
- Construction and operations contracts/partnerships (e.g., transportation, camp support, waste management, fuel etc.)

- Federal EIS Guidelines issued in June 2018
- Provincial Terms of Reference submitted in April 2021 with approval expected in June
- Significant baseline field programs and studies have already been completed with additional programs planned for 2021
- Coordinated Environmental Assessment to be progressed throughout 2021 with consultation occurring throughout the process



# Environmental Assessment Overview





## Planned activities:

- 2021:
  - Environment Committee and Process Agreement
  - Review of environmental data collected to date
  - Consultation on alternatives
  - TK and Traditional Land Use Information gathering
  - Work to produce a draft EA for end of 2021
- 2022:
  - Consultation on the draft EA
  - Update EA to produce a final EA
- 2023:
  - EA decision
  - Environmental Permitting



**FIRST MINING  
GOLD**

---

**For more information:**

communityrelations@firstmininggold.com

+1 604 639 8827

TF: 1 844 306 8827

[www.firstmininggold.com](http://www.firstmininggold.com)

---

